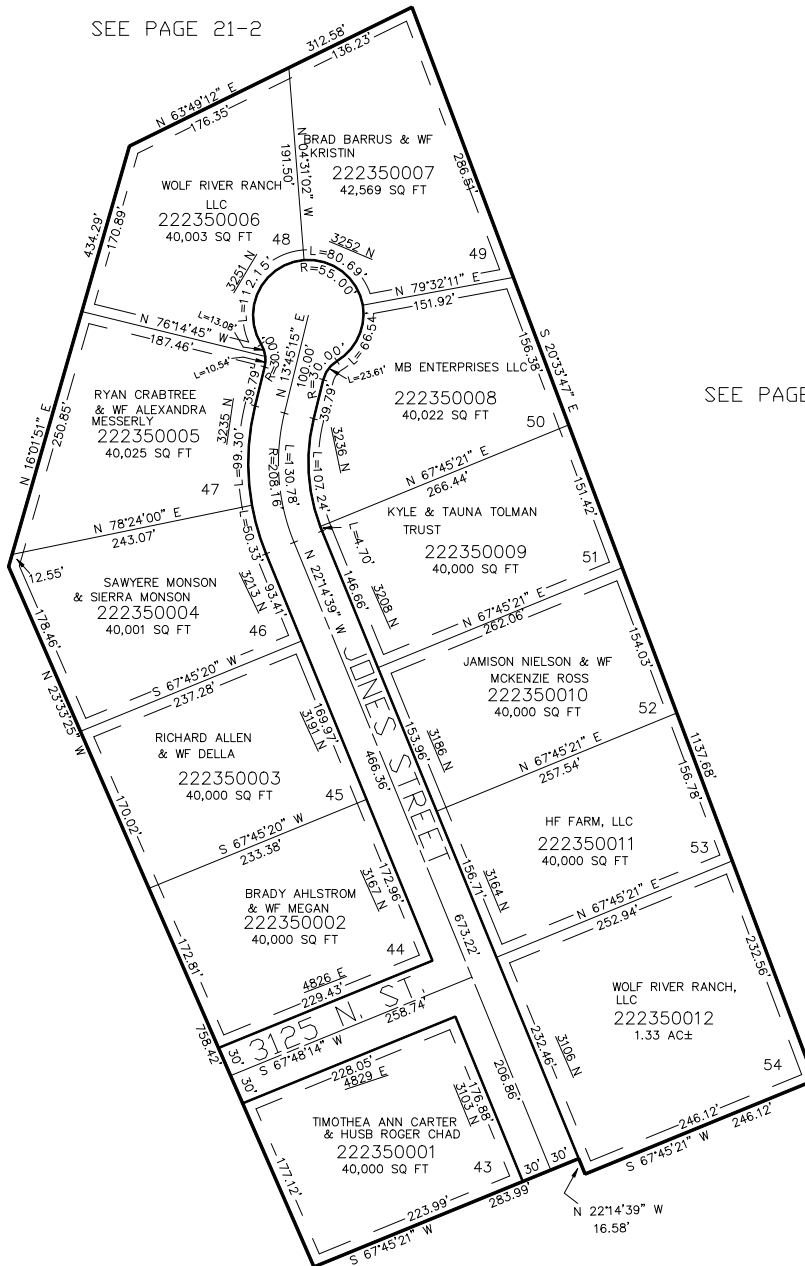


PART OF THE NW.1/4, OF SECTION 27, T.7N., R.1E., S.L.B. & M.
MOUNTAIN VIEW ESTATES No. 9

IN WEBER COUNTY
 SCALE 1" = 100'

TAXING UNIT: 28

SEE PAGE 21-2



SEE PAGE 21-2

SEE PAGE 21-2

FOR COMPLETE ENG DATA SEE ORIGINAL DEDICATION PLAT IN BOOK 61, PAGE 67 OF RECORDS.

SEE PAGE 216

10' UTILITY & DRAINAGE EASEMENTS EACH SIDE OF PROPERTY LINES AS INDICATED BY DASHED LINES EXCEPT AS OTHERWISE SHOWN.

FOR TAX PURPOSES ONLY